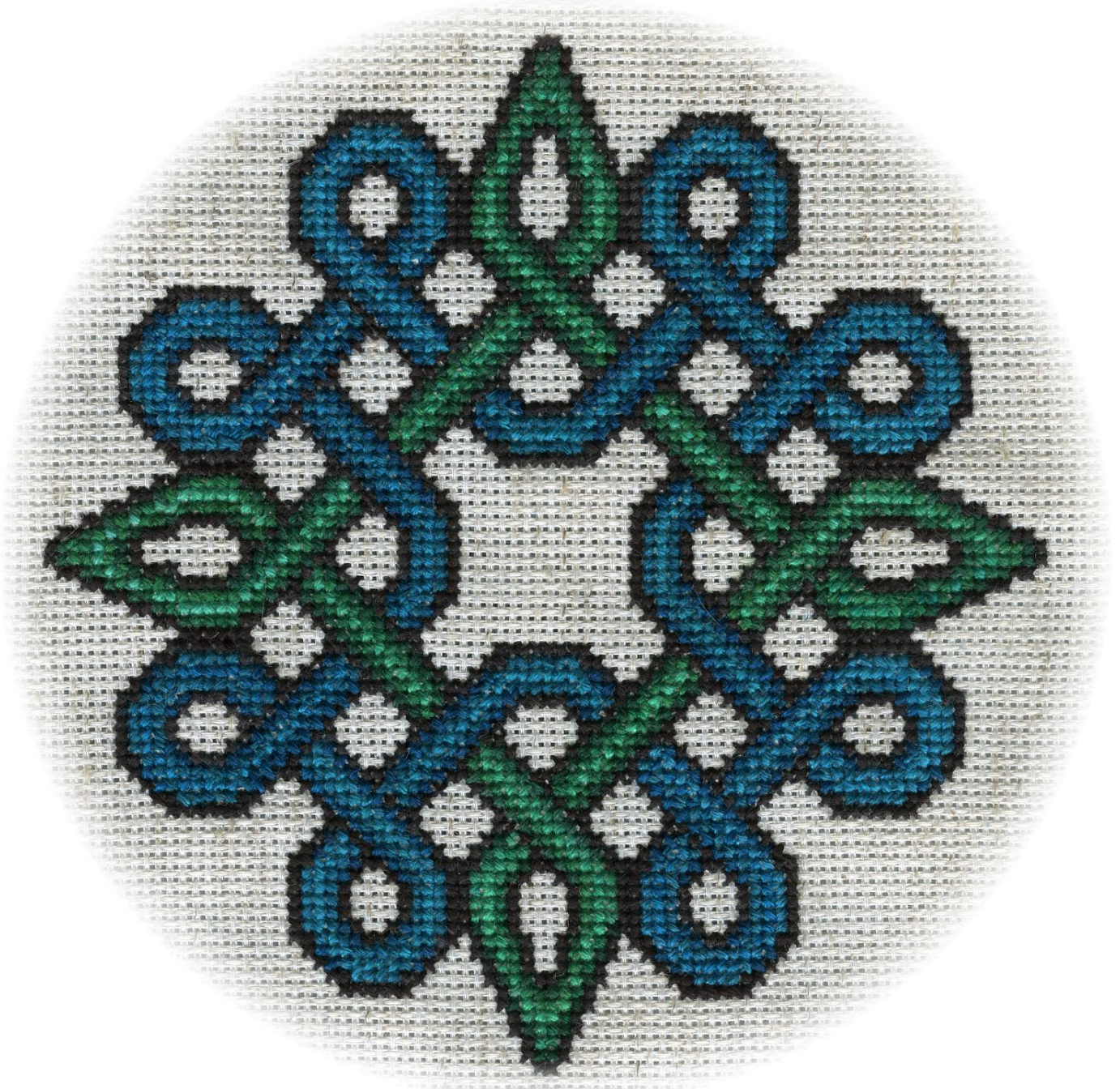


Entanglements

Knotty Cross Stitch Patterns



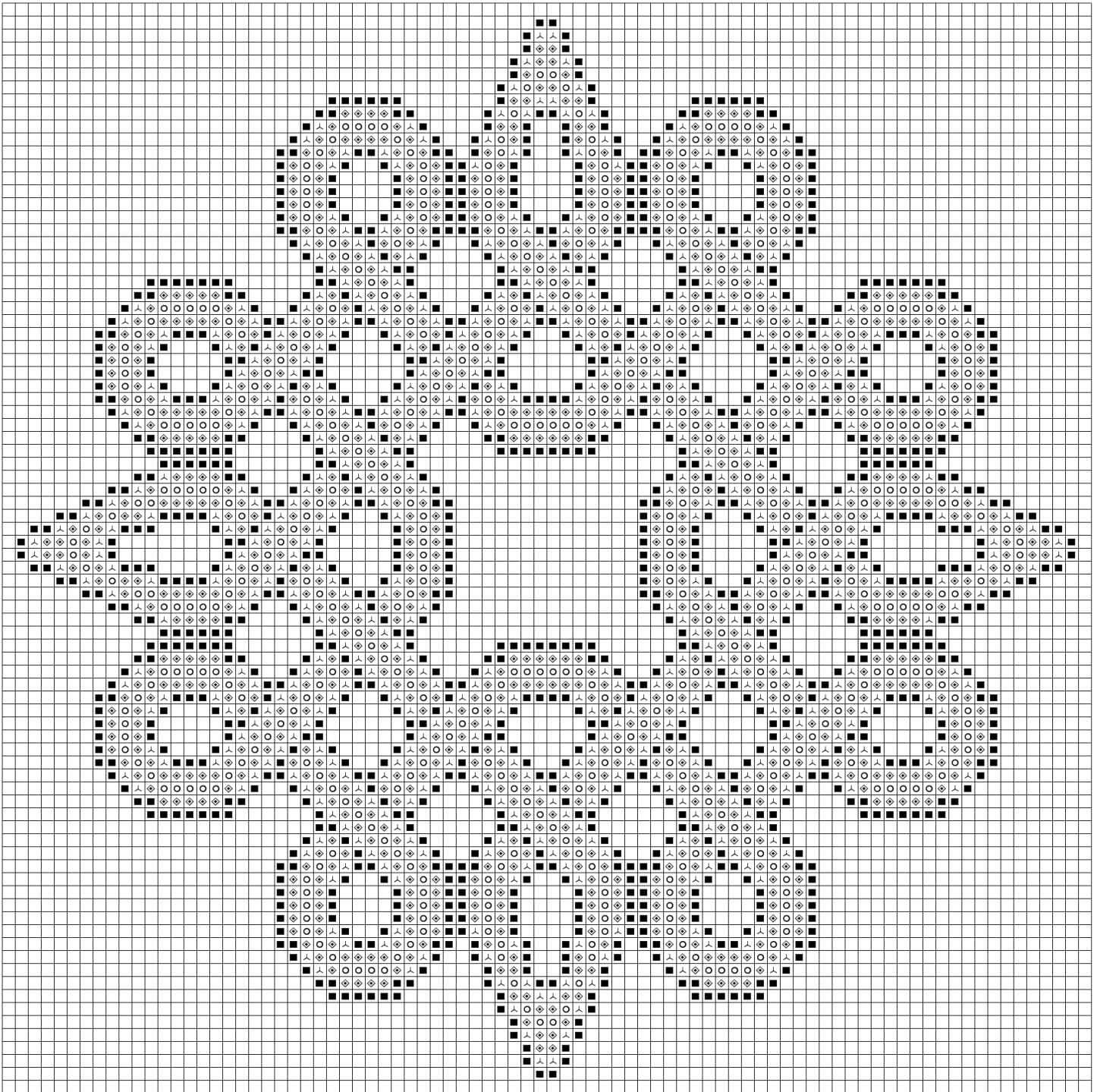
Event Horizon

Dimensions: 82 stitches square, 5.86" on 14 Count, 4.56" on 18 Count

Copyright © Xander Lih 2012

knottyentanglements.com

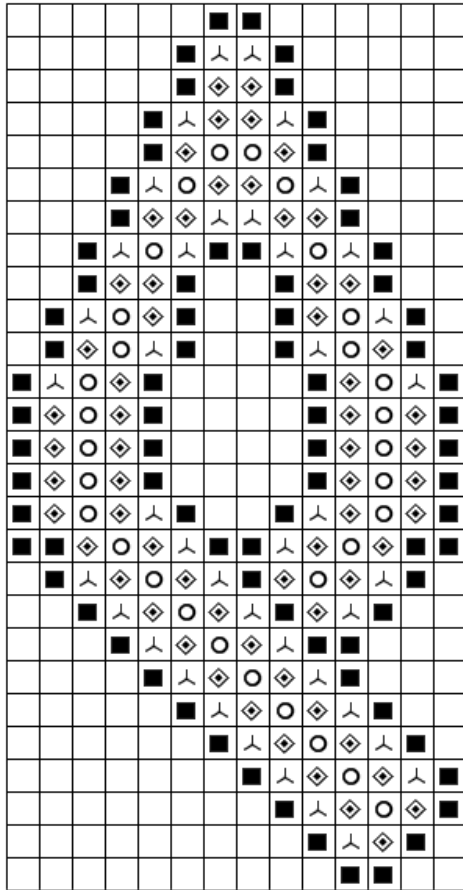
Event Horizon



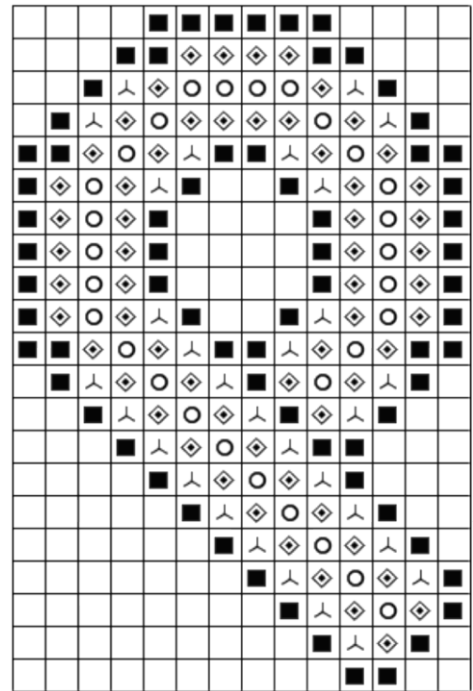
Stitch the outline using black floss. Once the outline is complete, use the shading instructions and the shapes guide to fill in the colors. While stitching the outline, constantly check back against the patterns, and confirm that your current position lines up with what has been already stitched.

- Highlight
- ◊ Primary
- 人 Shadow
- Outline

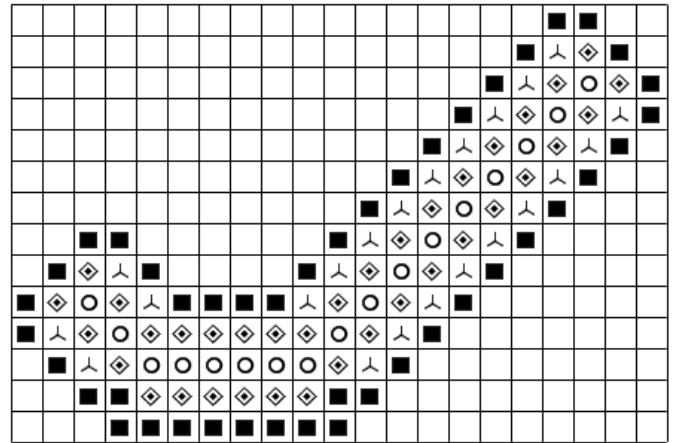
Point



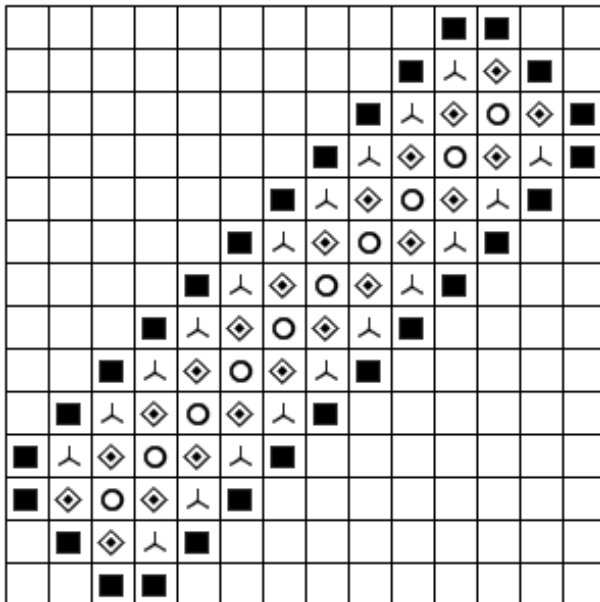
Loop



J-Bar



I-Bar



These are the shapes that make up the Event Horizon knot.

Note that the loop is taller than it is wide. The sides are seven stitches tall, but the top is only six stitches across.

- Highlight
- ◇ Primary
- ∧ Shadow
- Outline

Stitching Instructions

Stitching an Entanglements knotty cross stitch pattern is easier than it looks! Just take it step by step, and you'll soon complete your project with flying colors.

Outline

First the outline of the pattern is stitched, and then the interior is shaded to fill in the outline.

Use the template to stitch the outline of the pattern. When stitching the outline, work on completing the shapes described which make up the knot. In this manner you can tackle the outline one step at a time, making steady progress.

Once the outline is complete, it is filled to create a shaded effect on the completed pattern.

Some patterns use more than one Color Group, each group containing three shades of the group's color. Fill in one Color Group entirely before starting the next, going Highlight, Primary, then Shadow shade. Pick a spot in the outline to start, and then follow the path through the pattern, filling in each shape in turn.

The shading is made up of three shades of floss per Color Group.

Highlight

The Highlight color is stitched first. The highlight shade is the brightest shade, listed first in the Color Groups DMC codes. Stitch the highlight shade as a single line running down the center of the pattern path, parallel to the outline.

Primary

Next the Primary shade is stitched. This is the color of floss listed second, and is in the middle of the other colors on the brightness scale. Stitch the primary pass as lines running parallel to the outline, on either side of the highlight line. There is one highlight line, and two primary lines—one on each side of the highlight.

Shadow

Finally, complete the shading by filling in the remaining squares with the Shadow color. This is the darkest color of floss from the Color Group, listed last in the DMC codes. The shadow color fills in all squares inside the outline which were not filled by the highlight or primary stitches. Two lines of shadow stitches run alongside the path of the outline, but *only along the diagonal stretches*.

You're Done!

If you take it step by step, stitching the Outline, the Highlight, the Primary color, and filling in the Shadow, you will be able to quickly untie this knotty fun project!

Floss Requirements

Color Groups (Select 2)

Melon



DMC 3706, 3705, 3801

Coral



DMC 352, 350, 817

Red



DMC 666, 321, 498

Terra Cotta



DMC 3778, 3830, 3777

Mahogany



DMC 3776, 301, 300

Burnt Orange



DMC 947, 946, 900

Topaz



DMC 728, 783, 781

Moss Green



DMC 3819, 581, 580

Parrot Green



DMC 907, 906, 904

Pistachio



DMC 368, 320, 890

Turquoise



DMC 598, 597, 3808

Blue



DMC 813, 826, 824

Cornflower Blue



DMC 793, 3807, 791

Lavender



DMC 211, 209, 3837

White



DMC White, 415, 318

Gray



DMC 168, 169, 413

Illustration Colors Are Only Approximations of Thread Colors

1 skein apiece Black and selected Color Group members